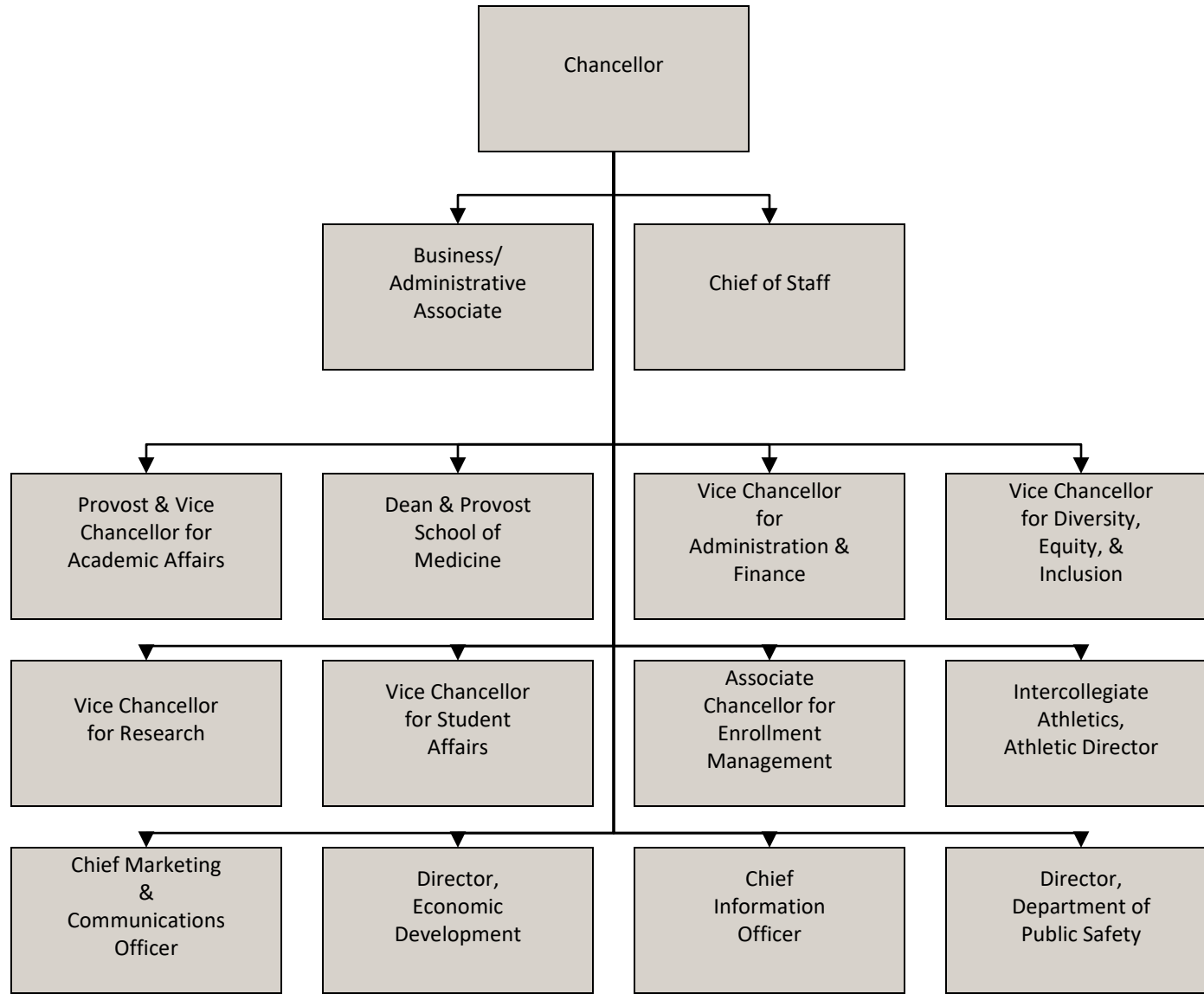


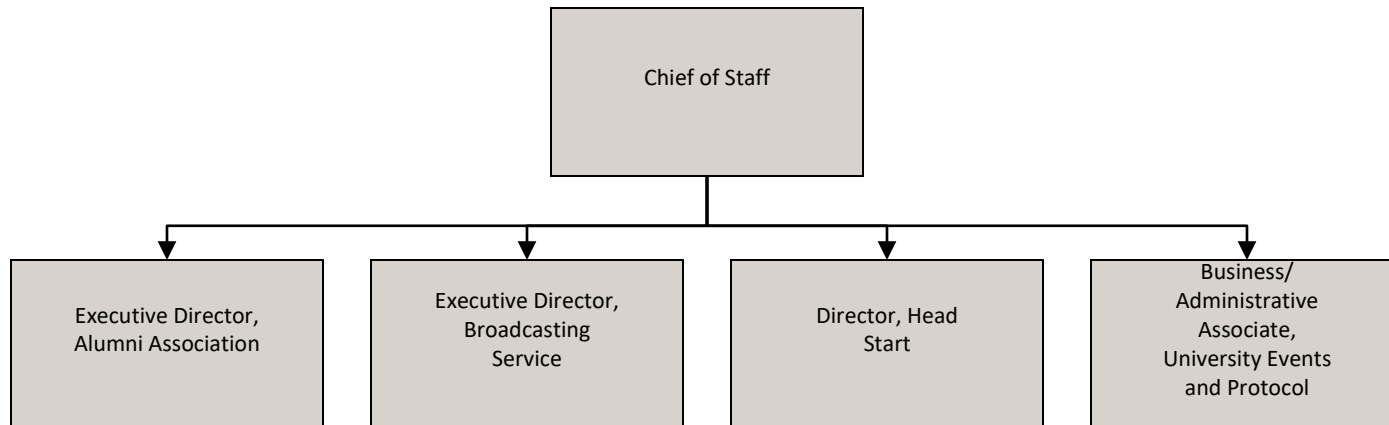
ORGANIZATIONAL CHART



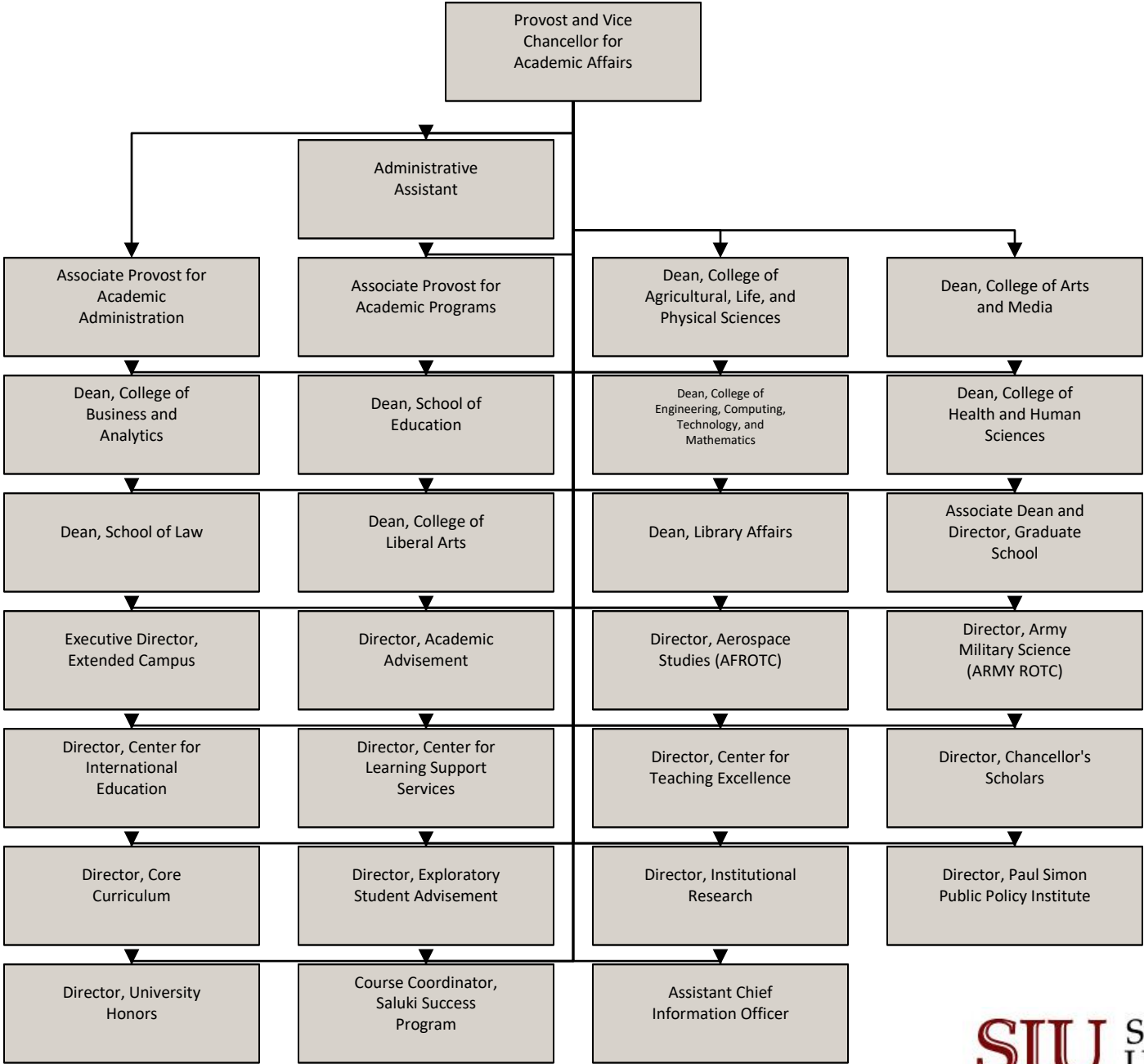
Office of the Chancellor



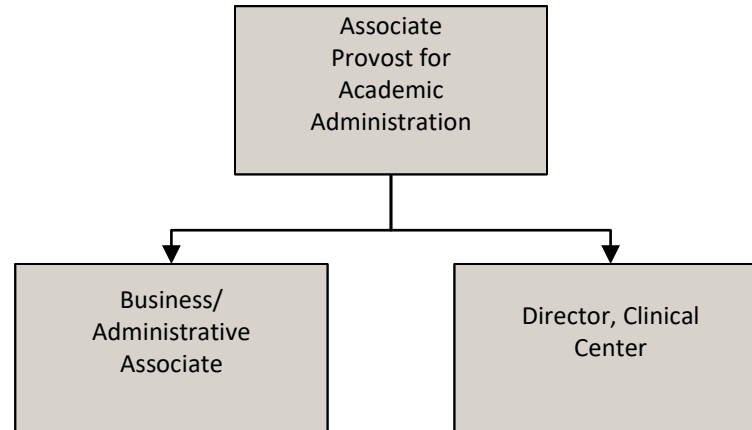
Office of the Chancellor Chief of Staff Reports



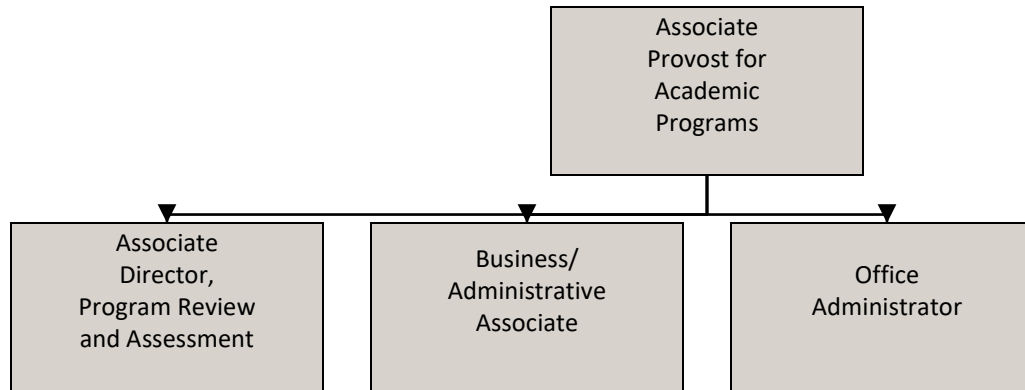
Provost and Vice Chancellor for Academic Affairs Reports to the Chancellor



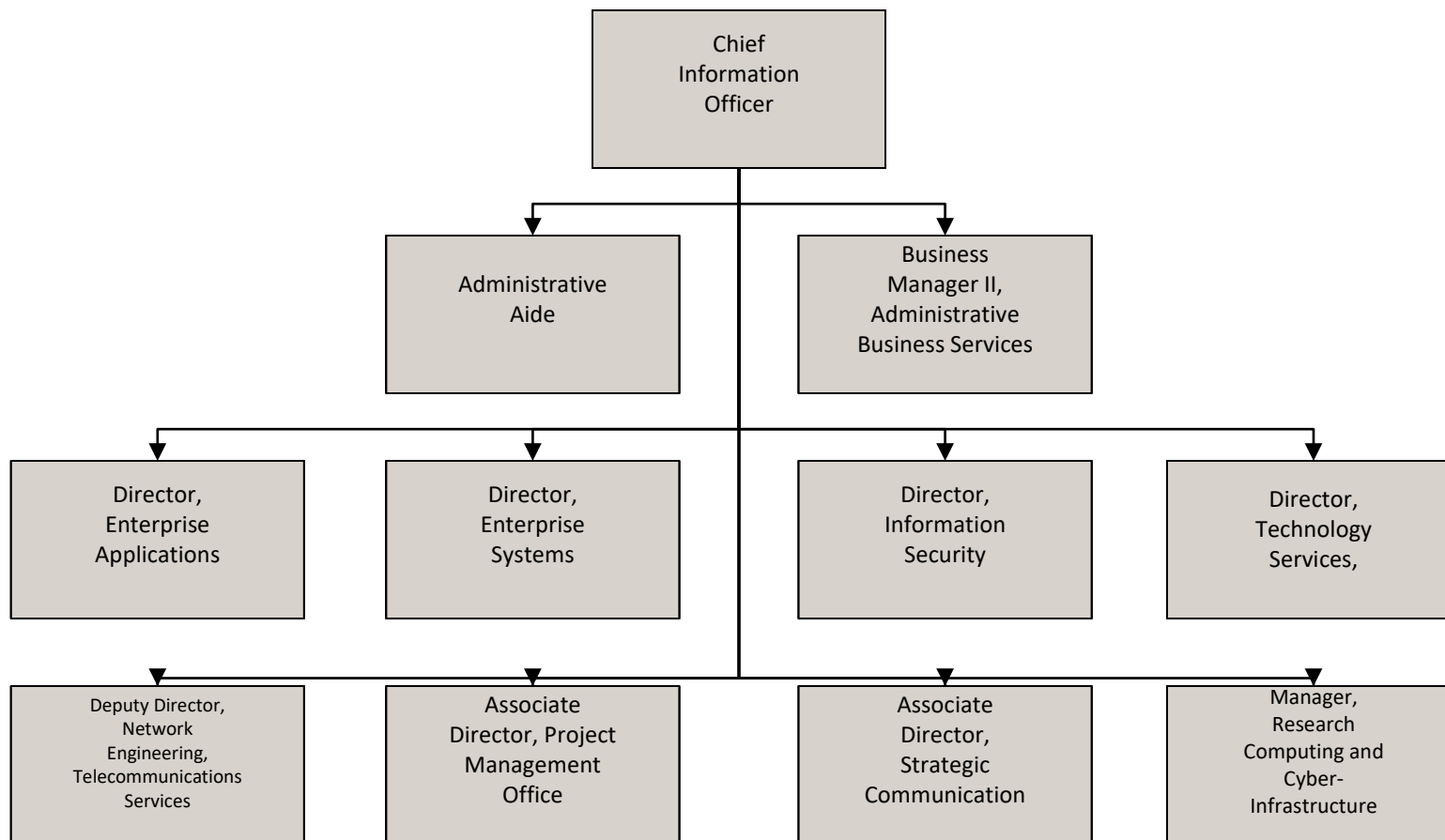
Associate Provost for Academic Administration
Reports to the Provost and Vice Chancellor for Academic Affairs



Associate Provost for Academic Programs
Reports to the Provost and Vice Chancellor for Academic Affairs

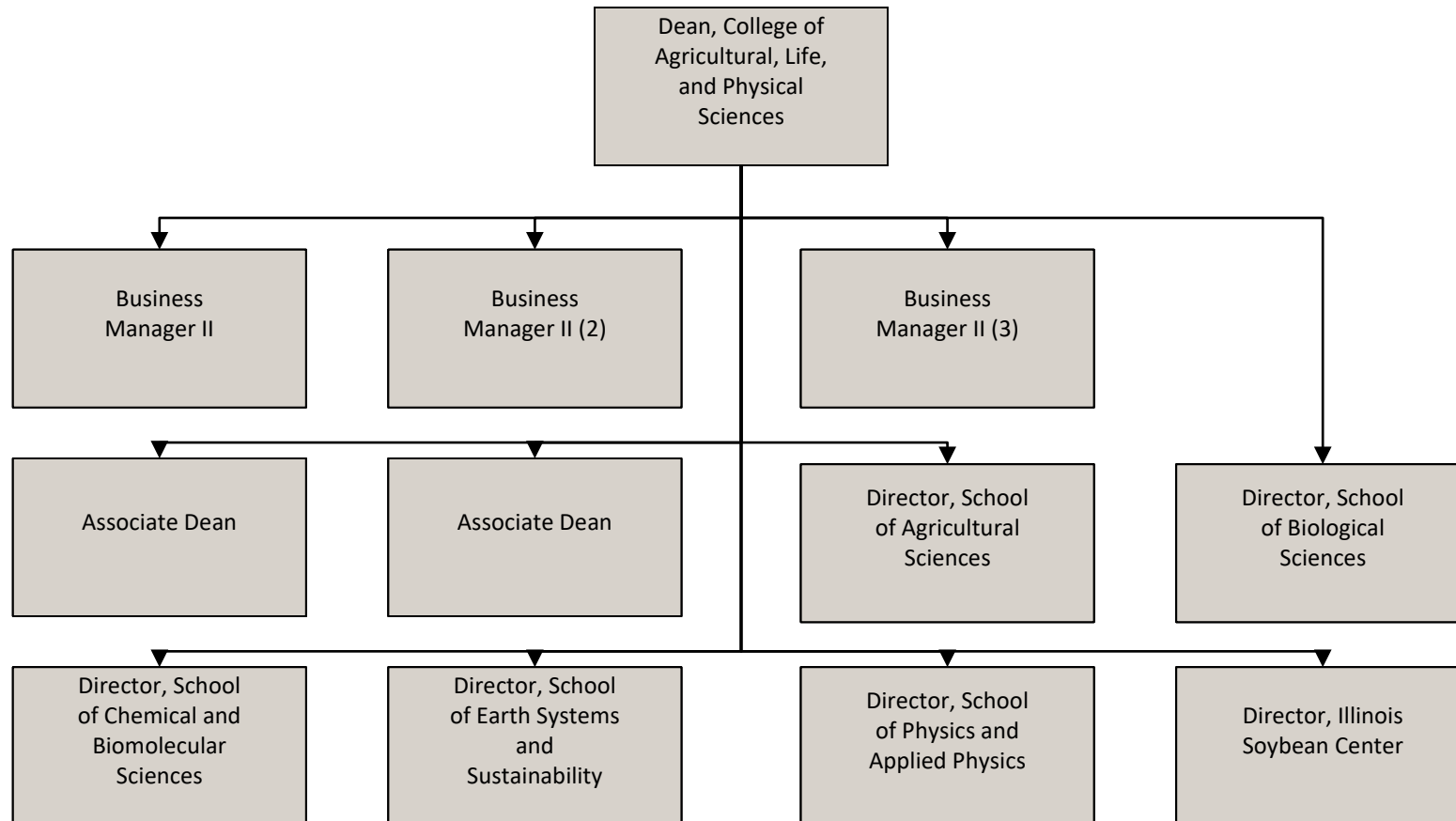


Chief Information Officer Reports to the Chancellor

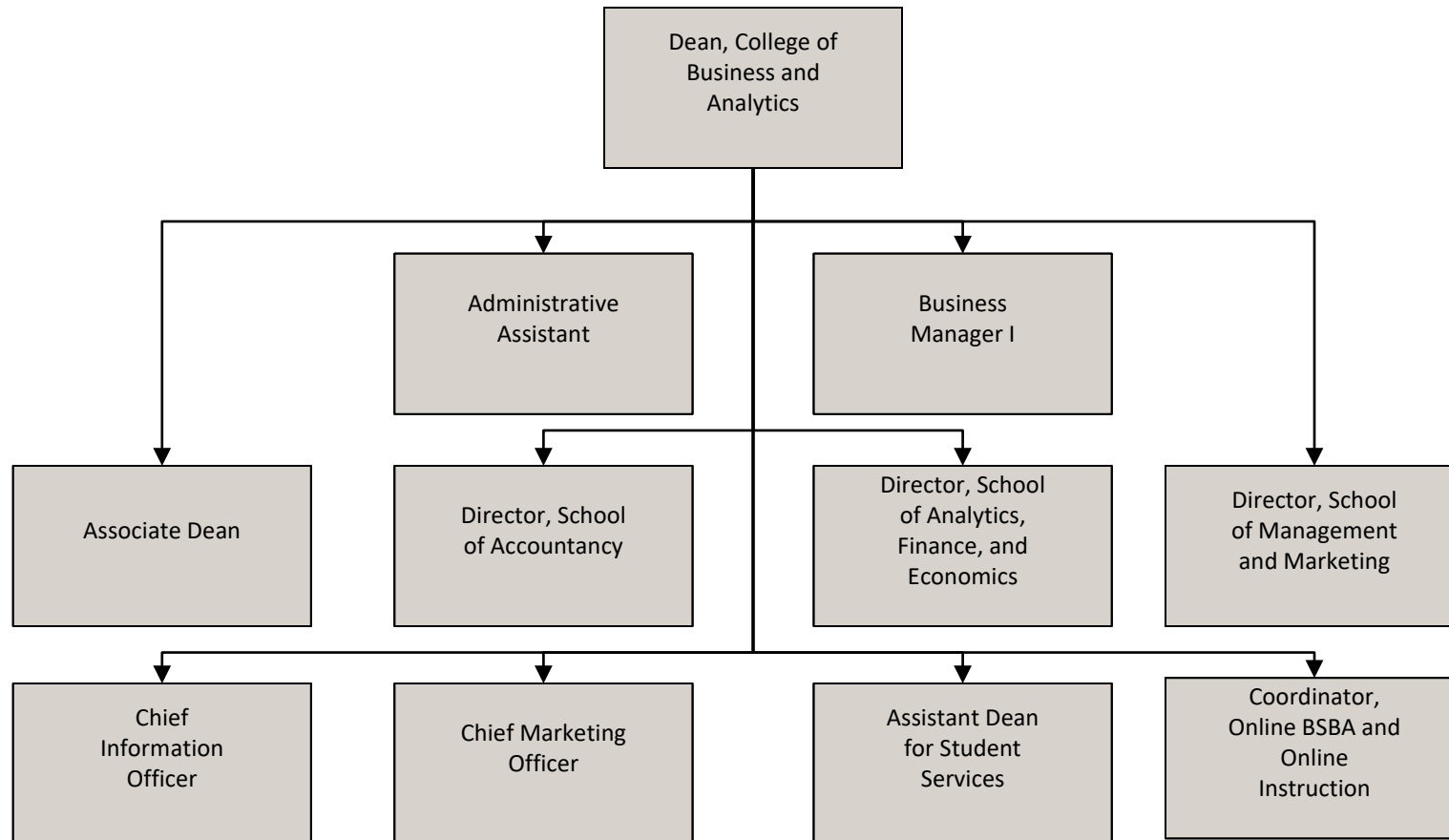


College of Agricultural, Life, and Physical Sciences

Reports to the Provost and Vice Chancellor for Academic Affairs

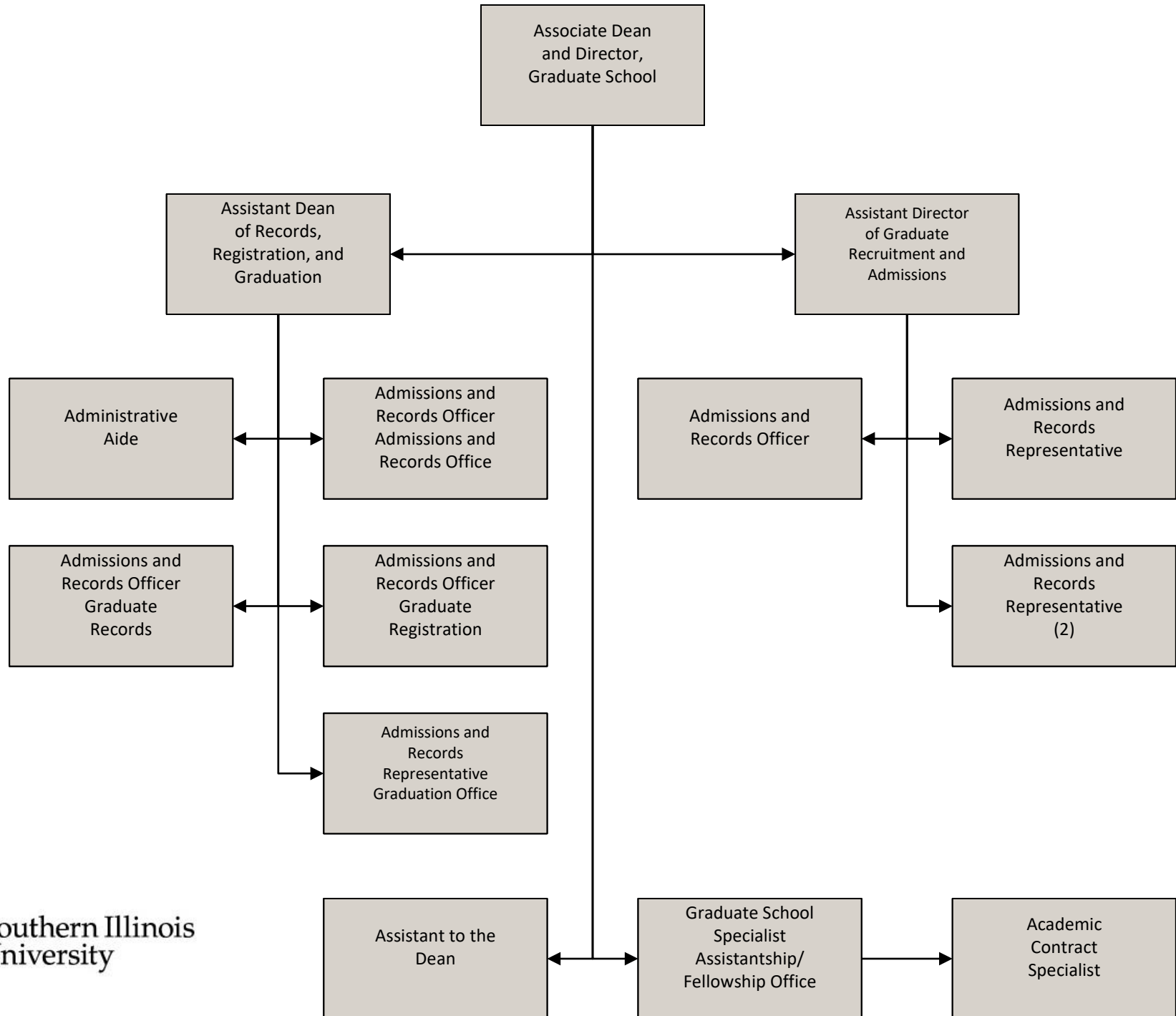


College of Business and Analytics
Reports to the Provost and Vice Chancellor for Academic Affairs

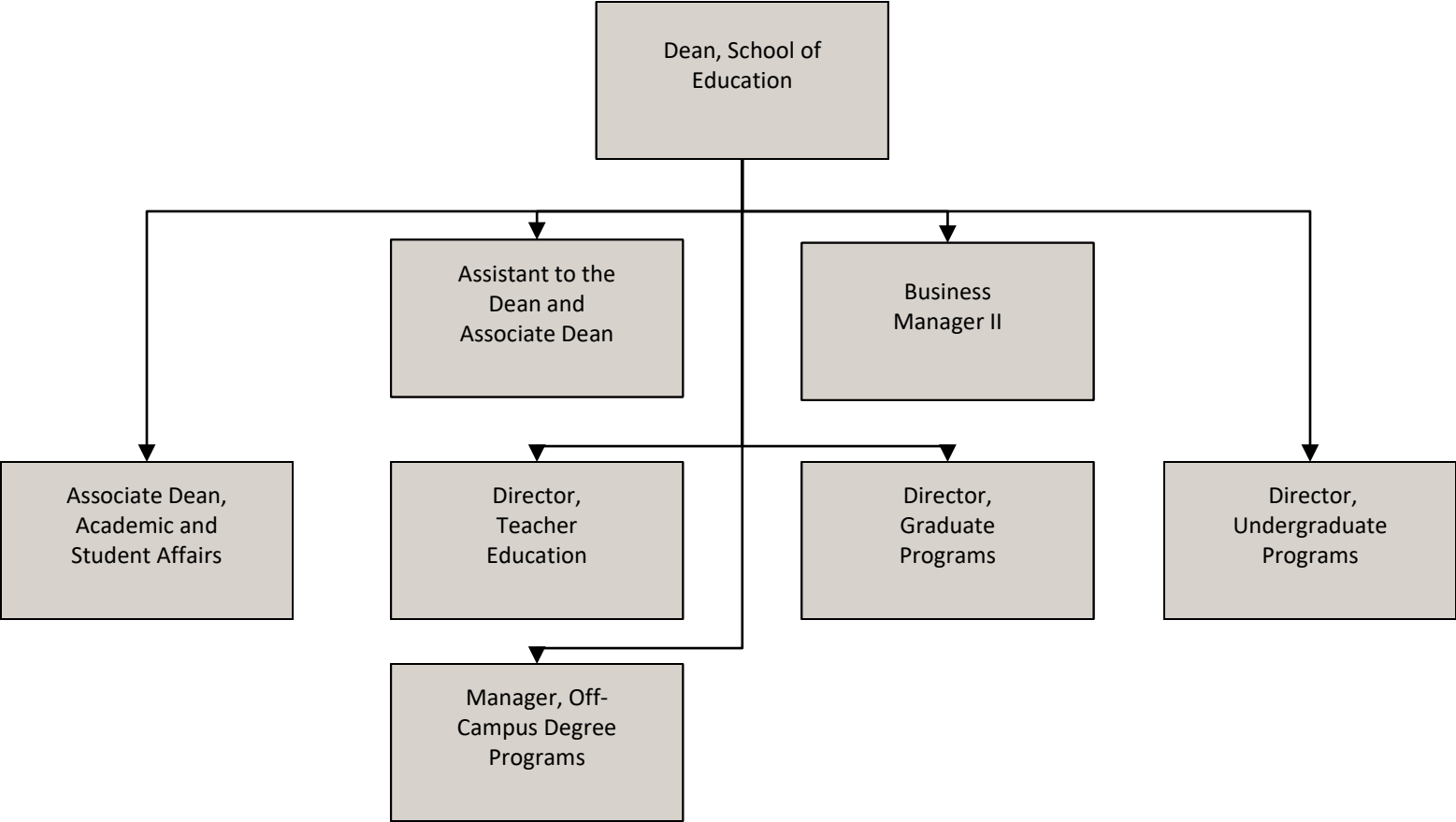


Graduate School

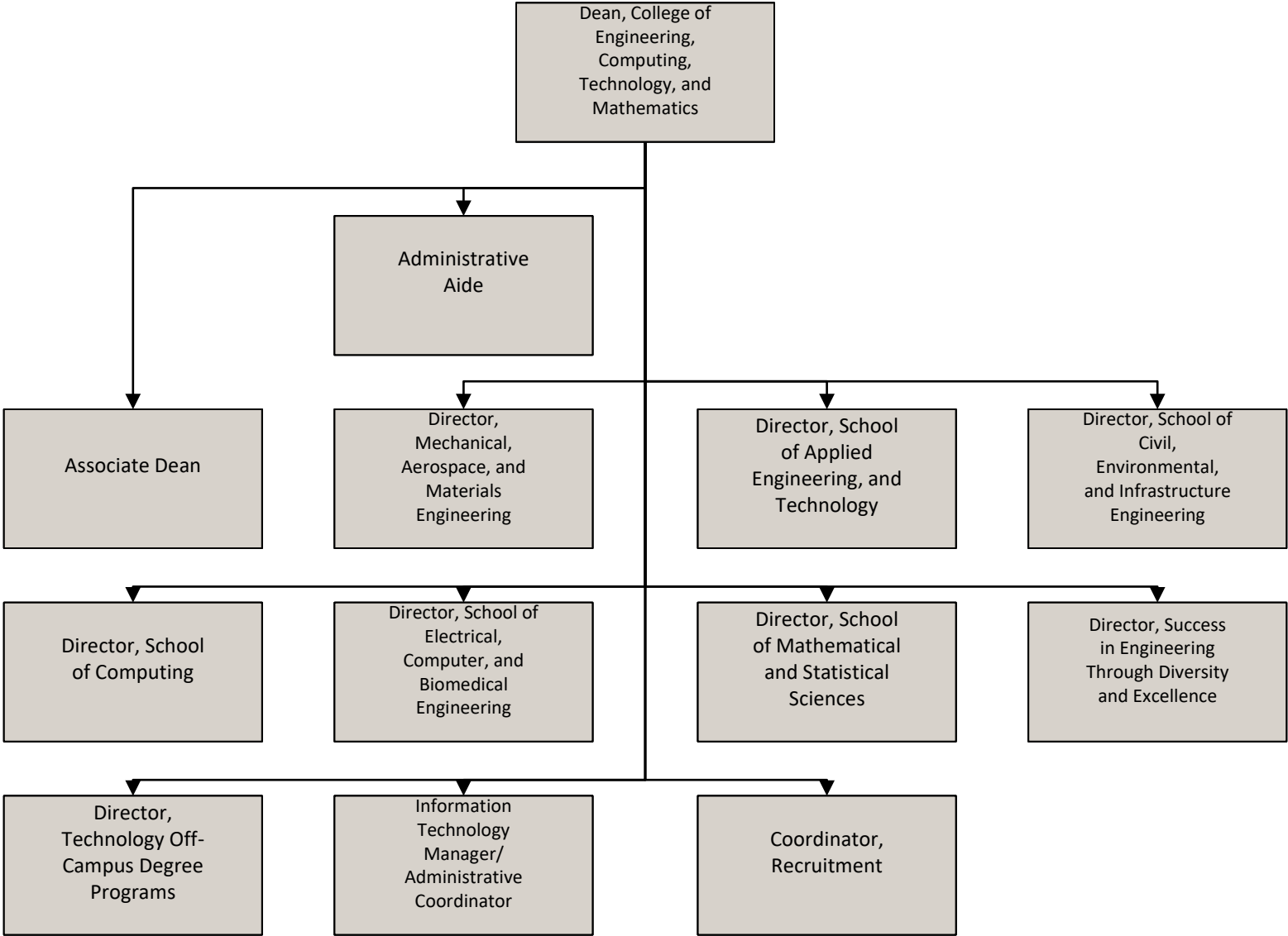
Reports to the Provost and Vice Chancellor for Academic Affairs



School of Education
Reports to the Provost and Vice Chancellor for Academic Affairs

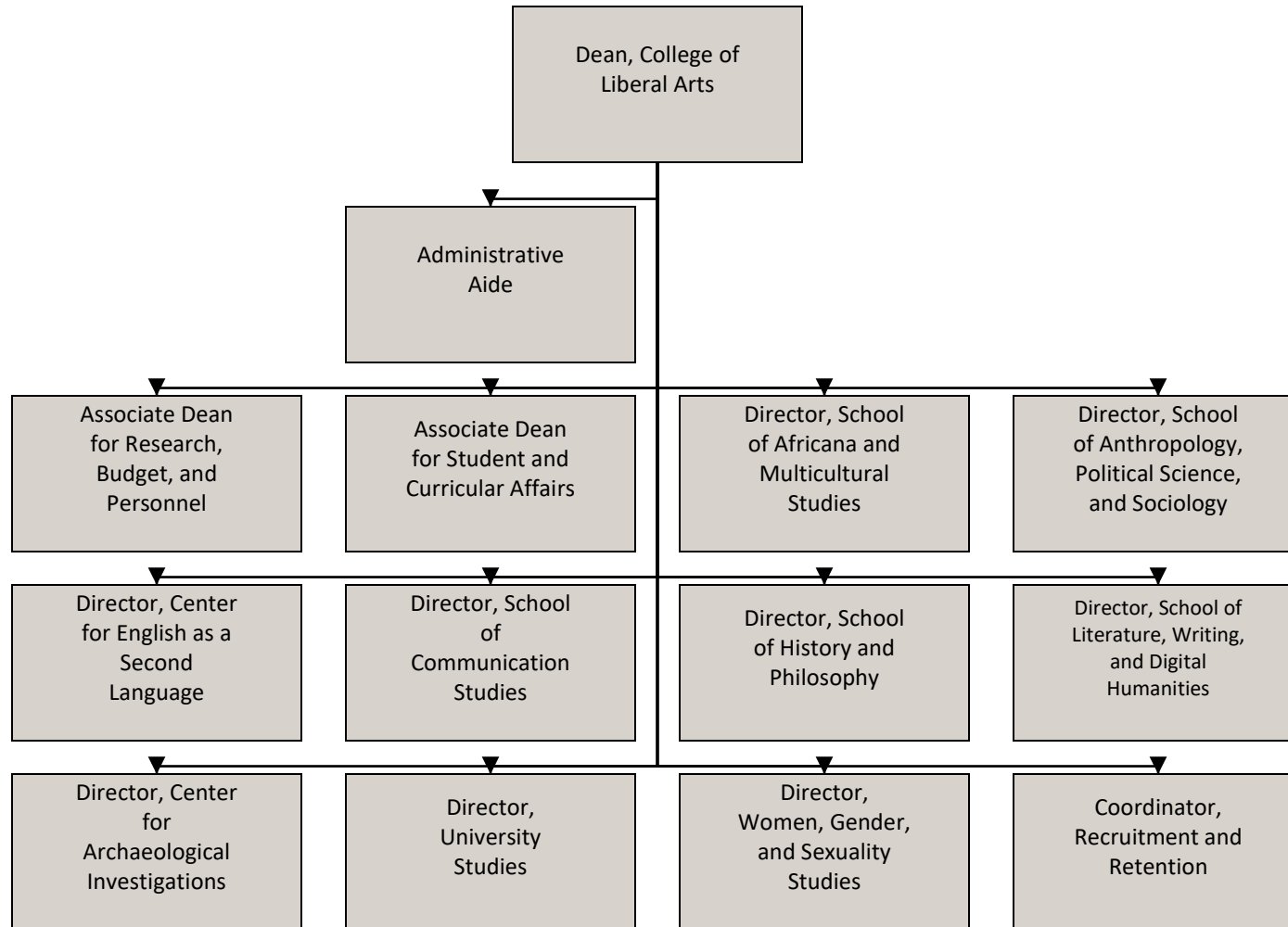


College of Engineering, Computing, Technology, and Mathematics
Reports to the Provost and Vice Chancellor for Academic Affairs



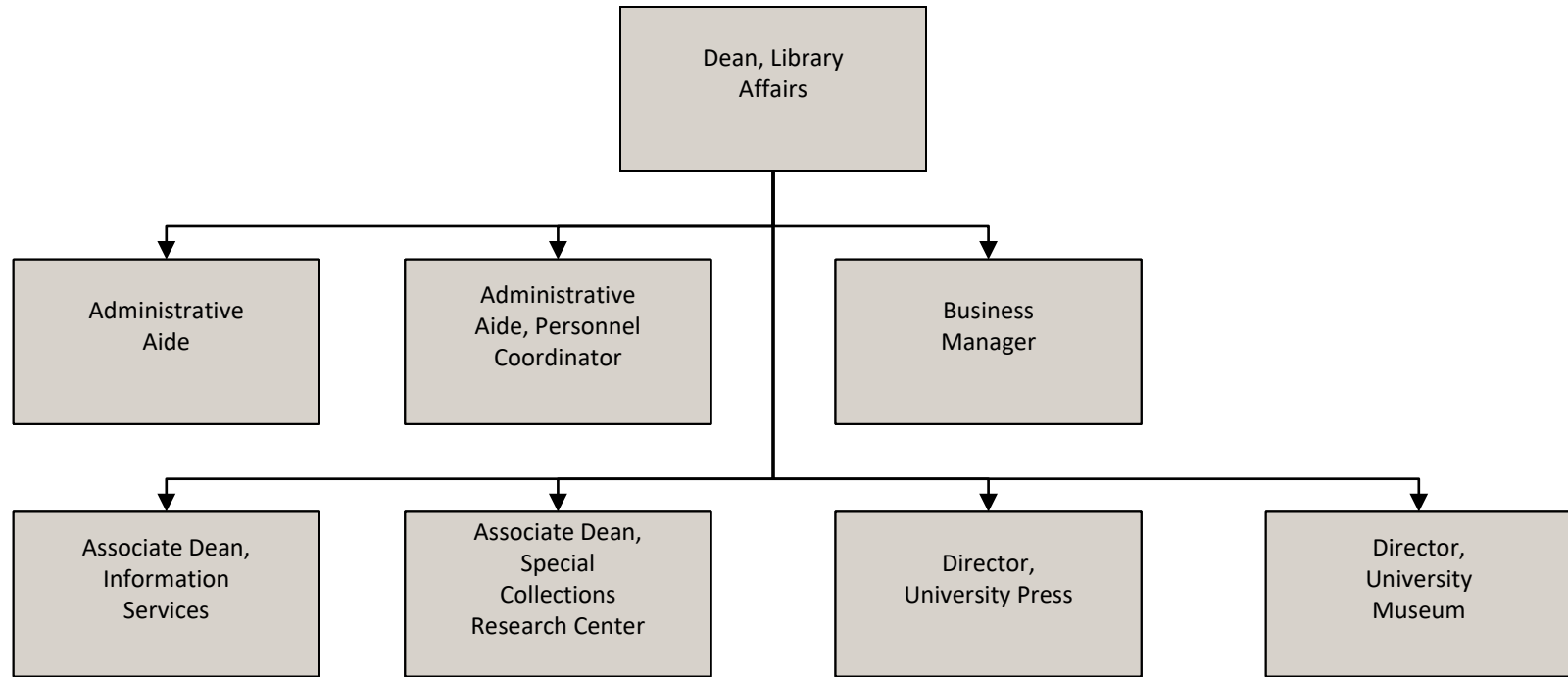
College of Liberal Arts

Reports to the Provost and Vice Chancellor for Academic Affairs



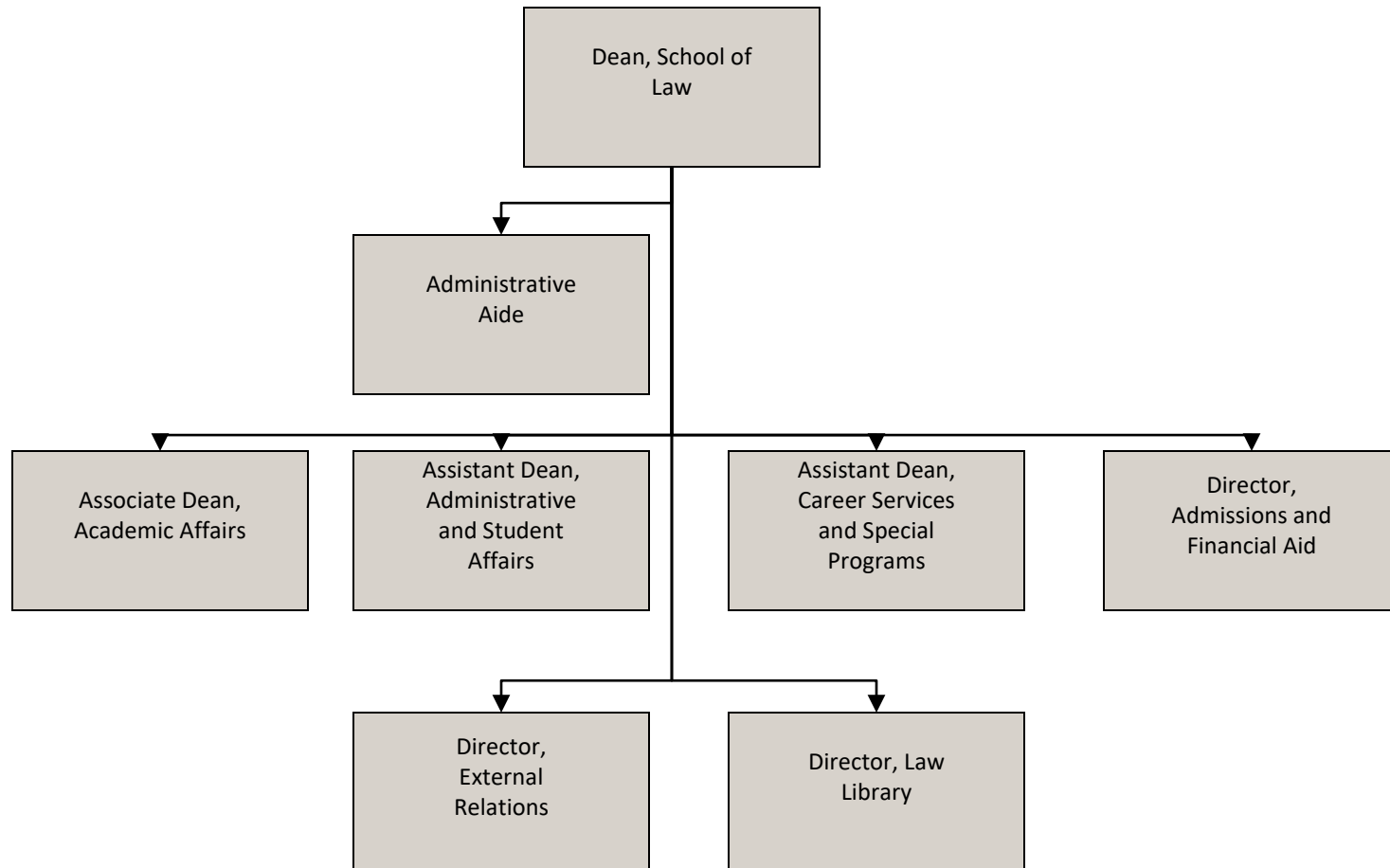
Library Affairs

Reports to the Provost and Vice Chancellor for Academic Affairs



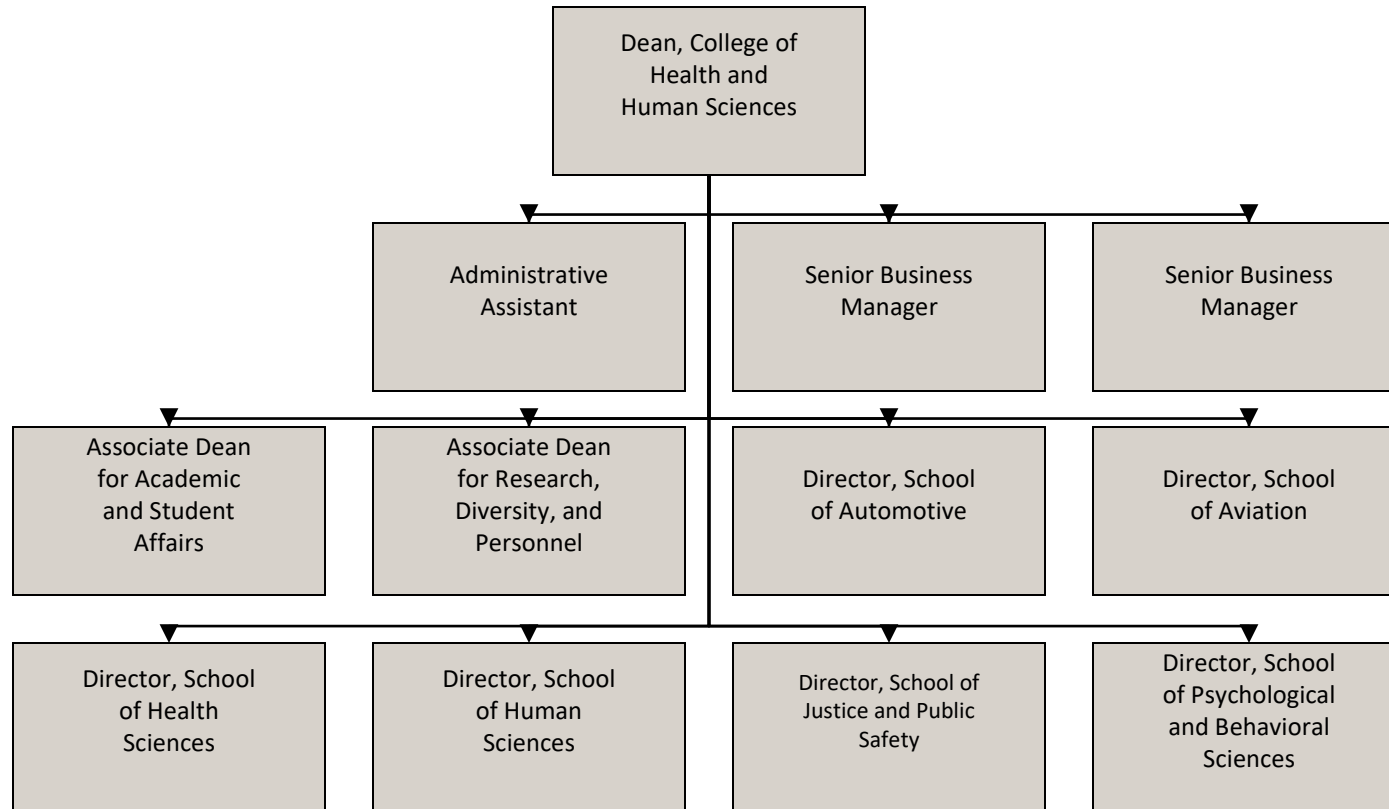
School of Law

Reports to the Provost and Vice Chancellor for Academic Affairs

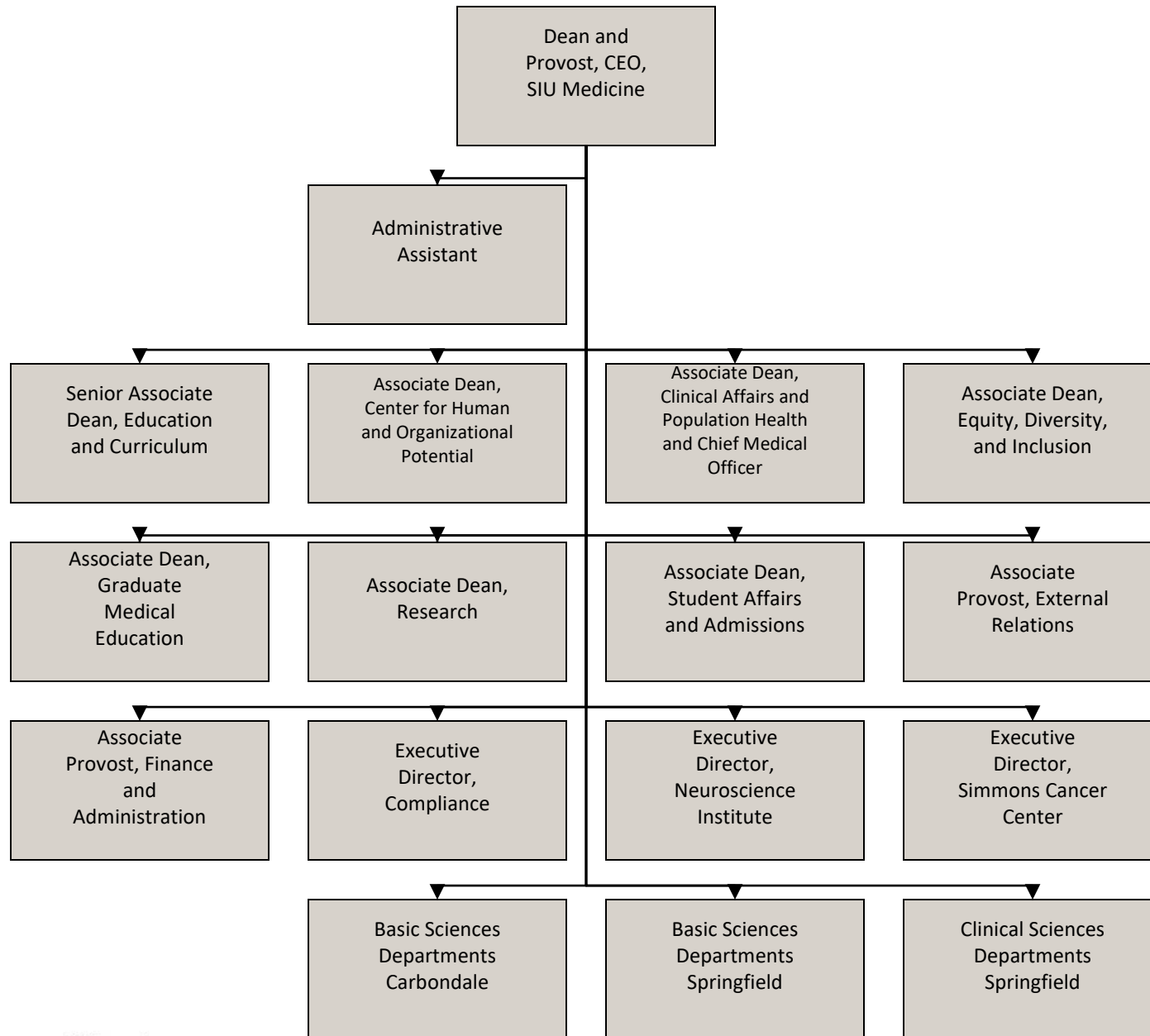


College of Health and Human Sciences

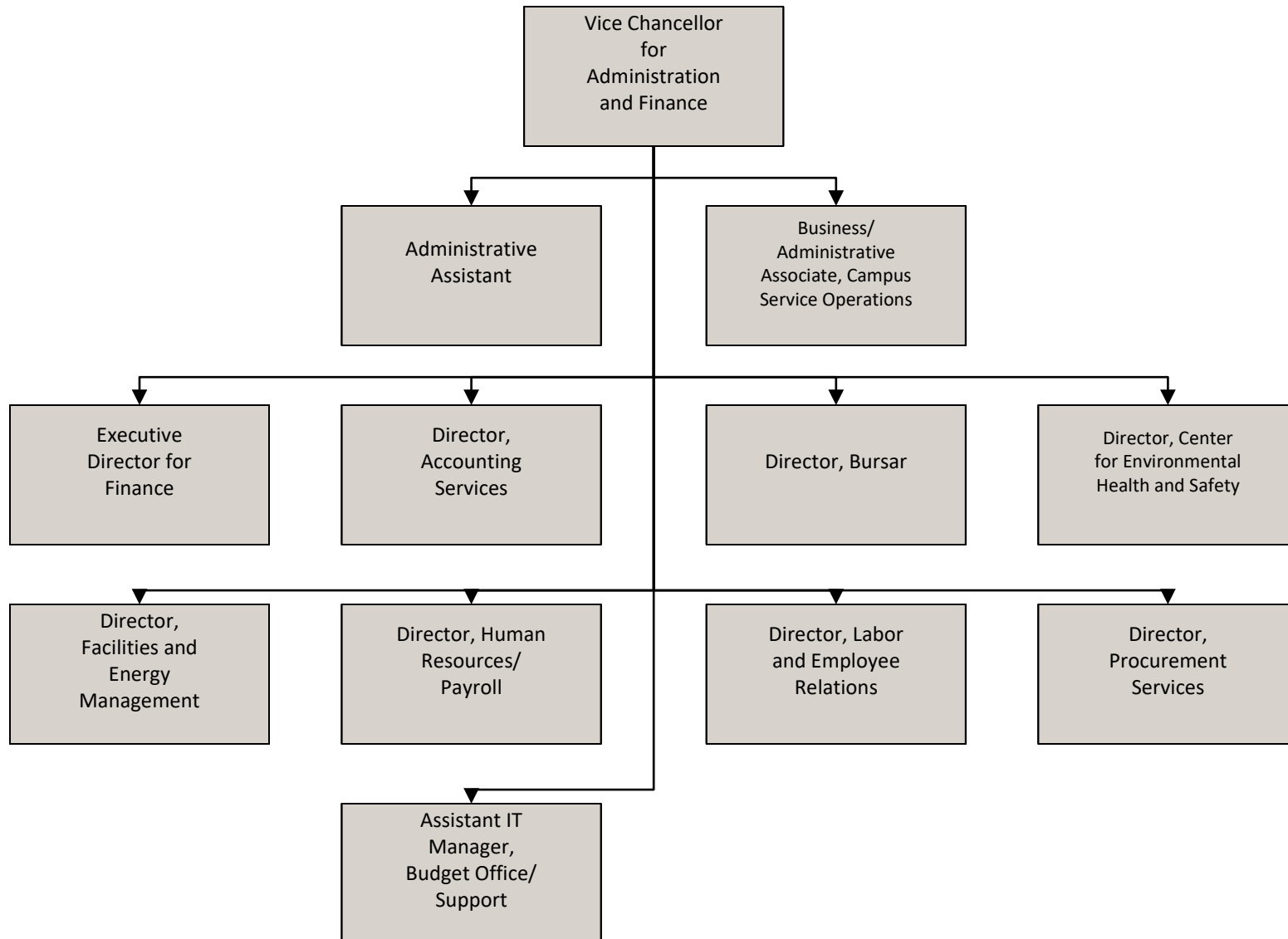
Reports to the Provost and Vice Chancellor for Academic Affairs



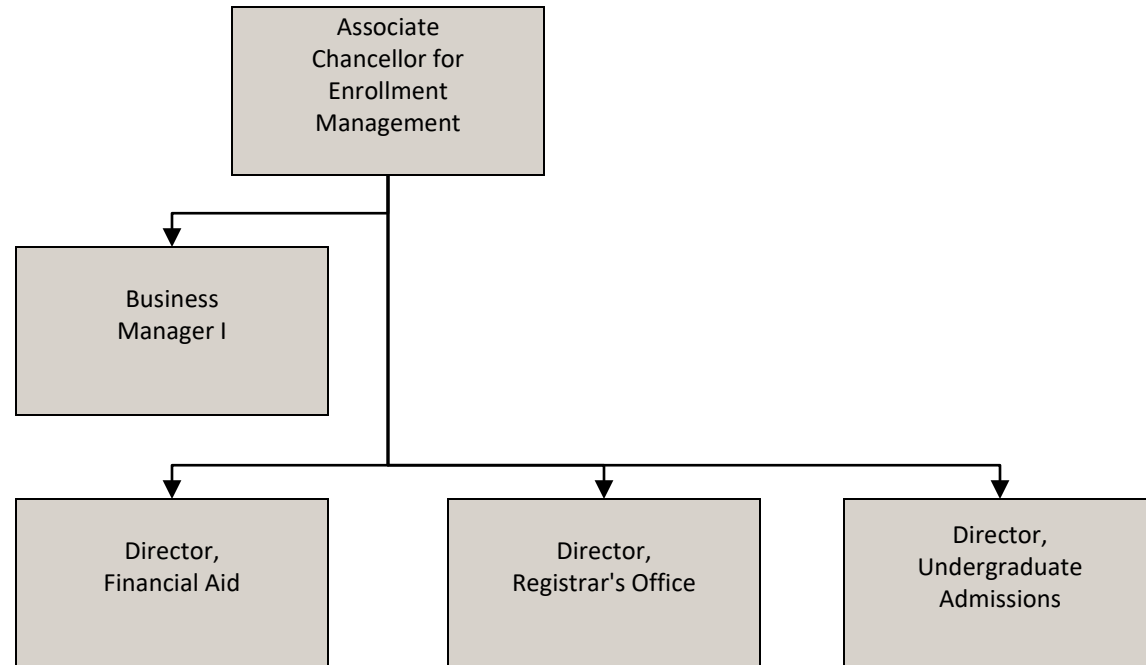
School of Medicine Reports to the Chancellor



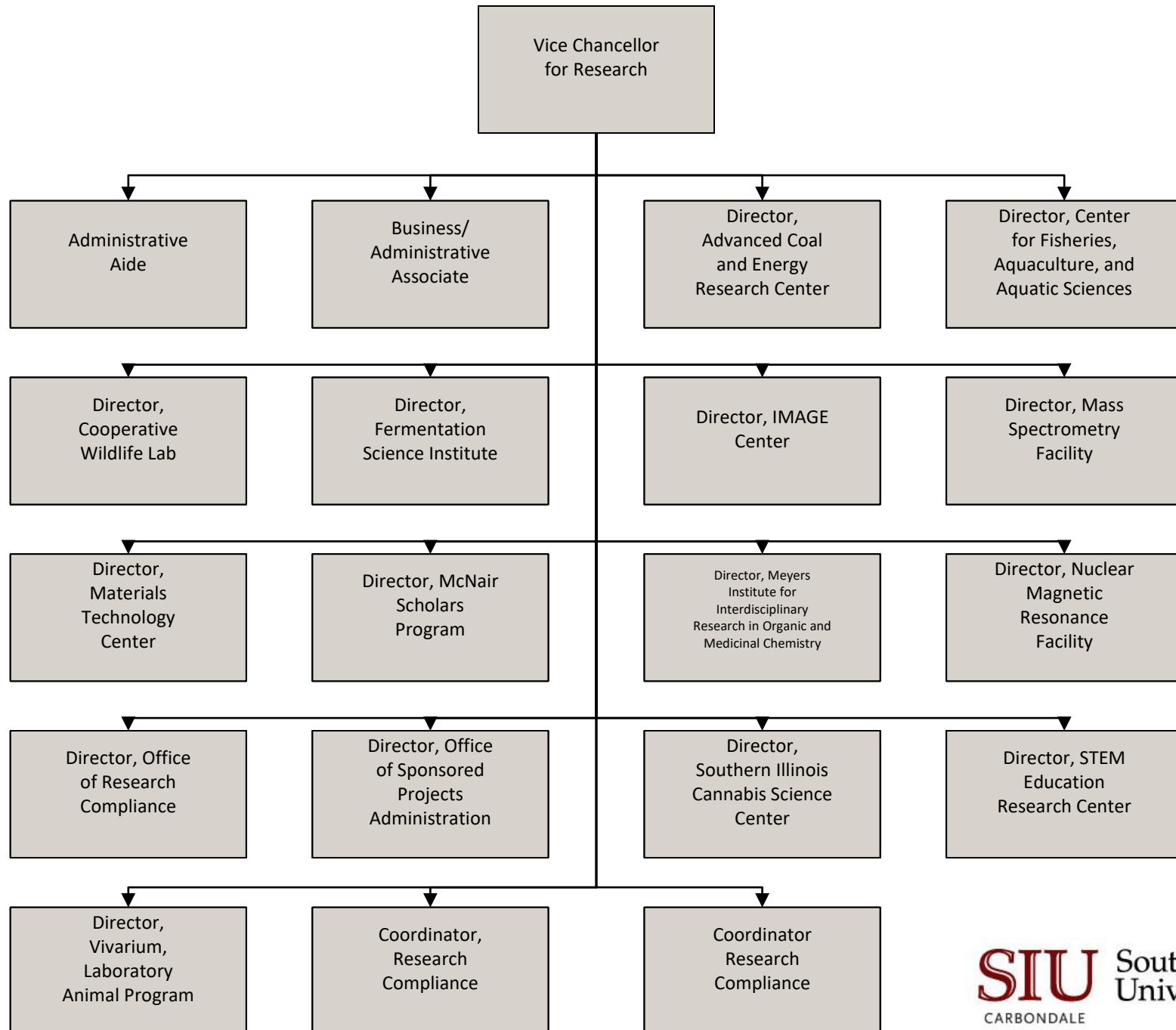
Vice Chancellor for Administration and Finance Reports to the Chancellor



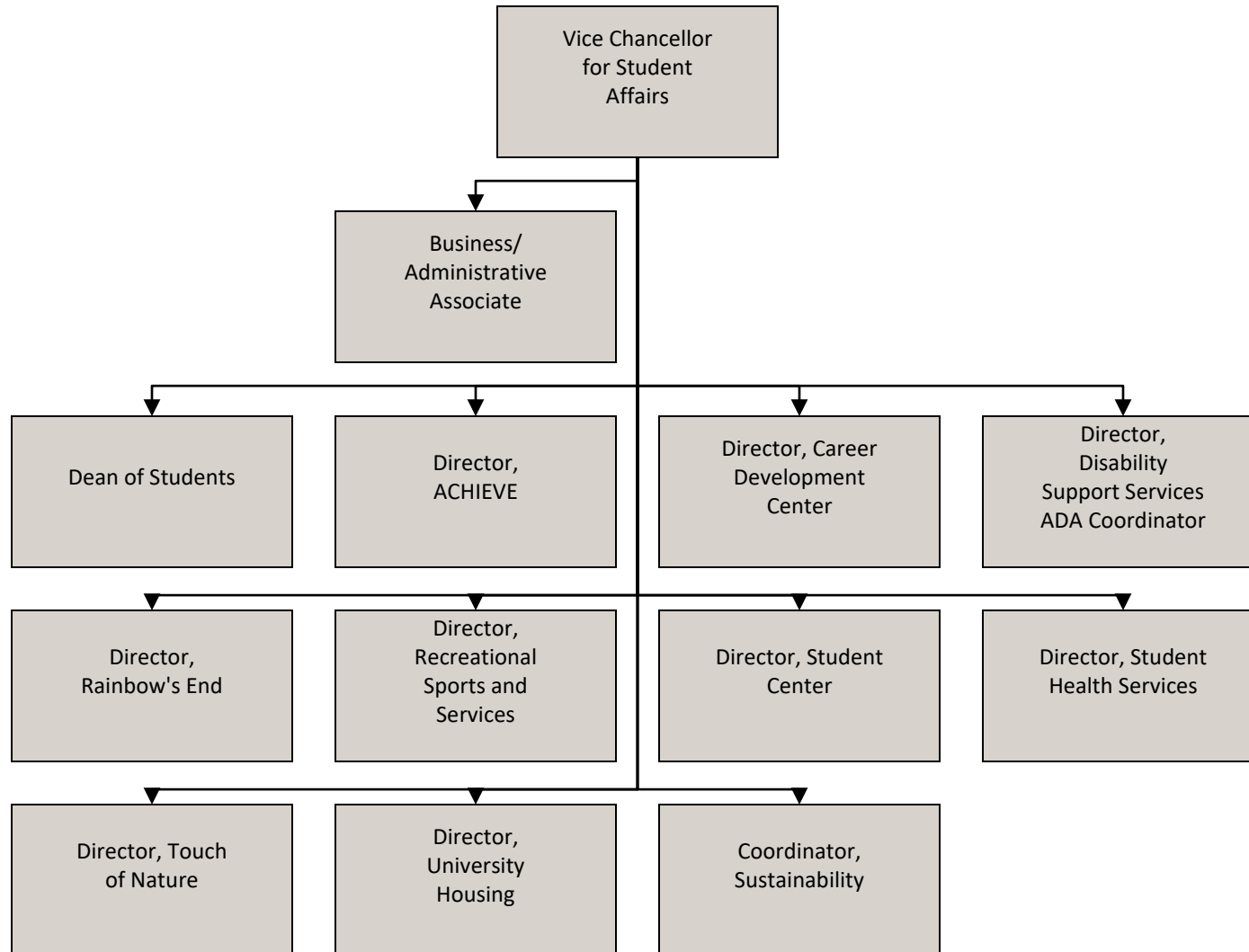
Associate Chancellor for Enrollment Management Reports to the Chancellor



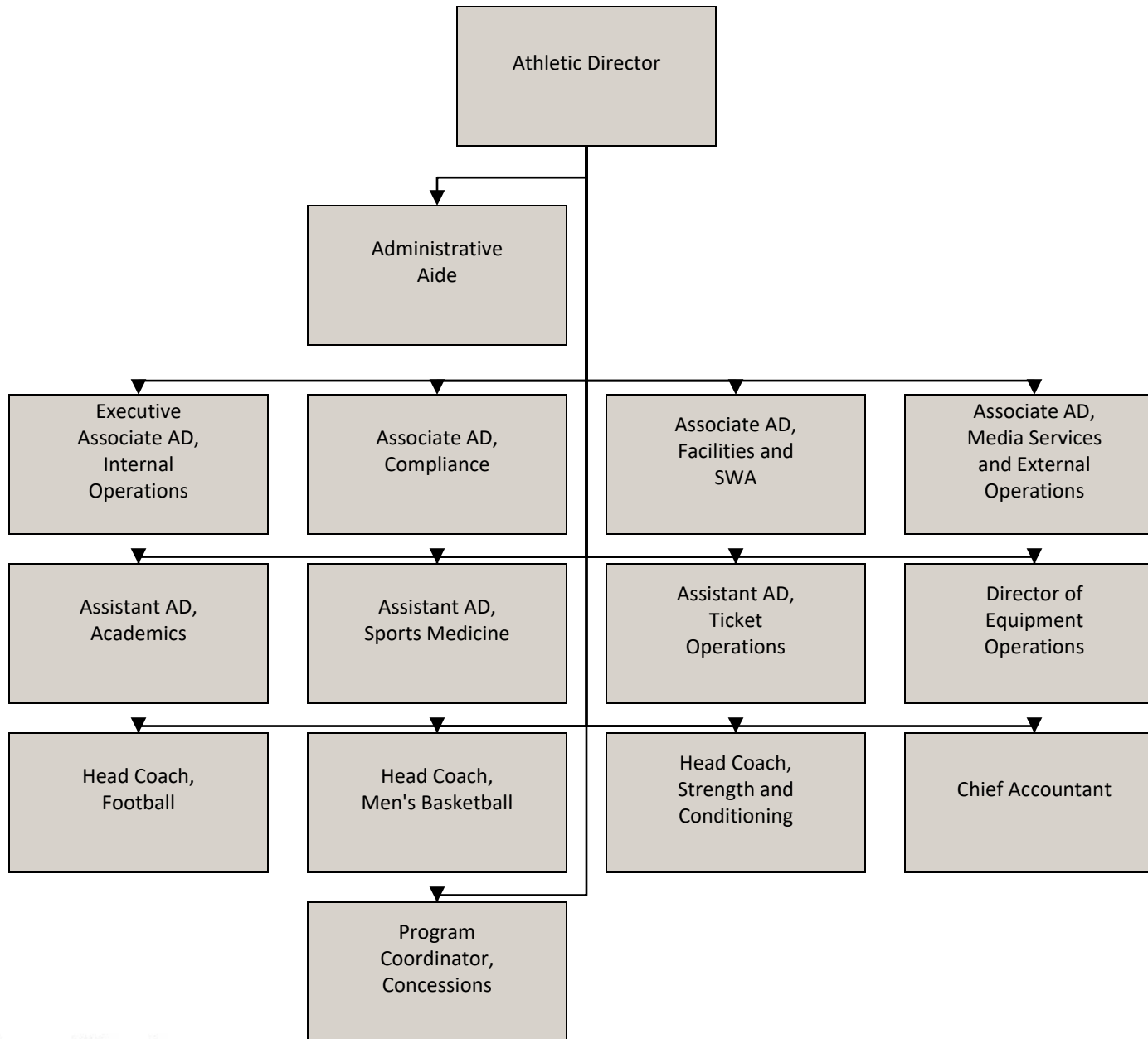
Vice Chancellor for Research Reports to the Chancellor



Vice Chancellor for Student Affairs Reports to the Chancellor



Intercollegiate Athletics Reports to the Chancellor



University Communications and Marketing Reports to the Chancellor

